

IFP6504P 65" INTERACTIVE WHITEBOARD DISPLAY

MEETBOARD 4 PRIME

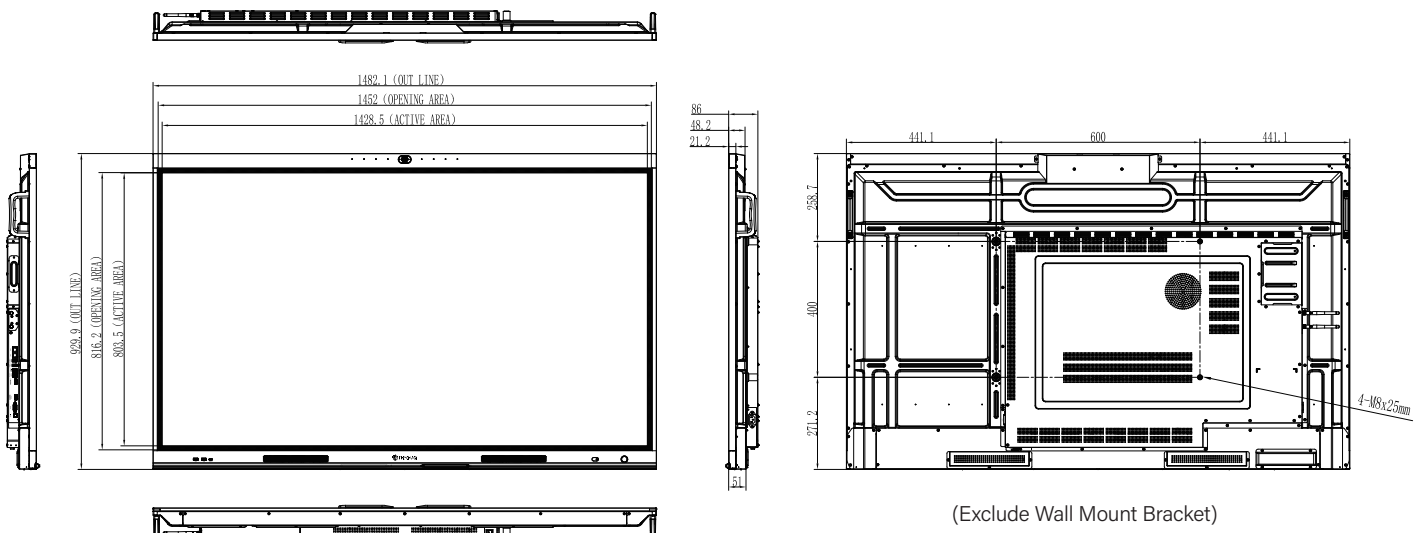


FEATURES

- Android 13.0 Platform with Google EDLA certification
- Google Play Access with all Google Services
- 4K UHD 3840 x 2160 resolution
- 128 GB storage + 8 GB memory
- 4K AI camera with auto-framing & sound tracking technology
- Dongle-free, pressure-sensitive active pen with built-in presentation controls
- IPS panel technology offers 400 nits high brightness and 178° wide viewing angles
- Incorporates IR touch technology with 40-point simultaneous multi-touch capability
- Built-in USB Type-C for faster transfer speeds and signal transmission
- Dual tips pen menu design for simultaneous annotation with two colors
- Integrated OPS Slot - Expand functionality with Windows OS
- Montage by DisplayNote for multi-display wireless screen sharing
- User-friendly whiteboard application for collaborative meetings
- Built-in Cloud Drive shortcut for account accessing and files sharing
- MeetCloud, online cloud whiteboard solution for remote teamwork discussion
- Embedded Wi-Fi 6 + Bluetooth Module
- Advanced Management and Security – App, USB and Samba service locks for easy management and secure access

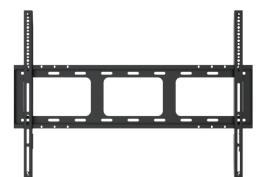
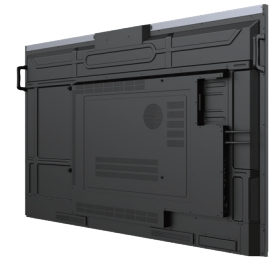
The IFP6504P, a 65-inch MeetBoard 4 Prime Interactive Whiteboard Display, an advanced interactive display designed to revolutionize team collaboration and communication. Engineered to be the ultimate hub for modern workspaces, this display focuses on intuitive usability and seamless integration. It features Android 13.0 with EDLA Google services, 4K AI camera video conferencing capability, a built-in online cloud whiteboard solution with an active pen, and Montage multi-screen sharing. The Meetboard 4 Prime smart board integrates sleek design and state-of-the-art technology to enhance any space, whether it's a corporate office, IT environment, or creative studio.

TECHNICAL DRAWING



SPECIFICATIONS

Panel	
Panel Type	LED-Backlit TFT LCD (IPS Technology)
Panel Size	64.5"
Max. Resolution	UHD 3840 x 2160
Pixel Pitch	0.372 mm
Brightness	400 cd/m ²
Contrast Ratio	1200 : 1
Viewing Angle (H/V)	178°/178°
Display Colour	1.07G colors (10bits).
Response Time	5 ms
Surface Treatment	Haze 25 %, 2H, Anti-Glare
Frequency	
Frequency (H)	30 kHz-135 kHz
Frequency (V)	30 Hz-76 Hz
Signal Input	
HDMI	2.1 x 1
Signal Output	
HDMI	2.1 x 1
External Control	
RS232 In	9-Pin D-Sub
LAN	RJ45 x 2
Embedded Player	
OS	Android 13.0
CPU	Cortex A76+A55
Memory	8G
Storage	128G
Other Connectivity	
USB	USB 3.0 x 5 (Media Playback), Type-C (PD:60W)
OPS Slot	Yes
Audio	
Audio Out	S/PDIF
Internal Speakers	15W x 2
Touch Screen	
Technology	Infrared Touch Frame
Positional Accuracy	±1 mm
Panel Interface	USB (Type-B)
Single Touch Plug & Play	Windows 2000/XP/Vista/CE 6.0 macOS
Multi-touch Plug & Play	40 point touch for Windows 7/8/10/11
Multi-touch Support by Driver	20 points for Android/Linux (kernel 3.5 above), Chrome 39 or above 20 point touch for macOS (supported by UPDD driver)
Integrated Camera	
Camera Resolution	8M
Camera Pixel	3840*2160(30fps)
Microphone	8-Array
Power	
Power Supply	Internal
Power Requirements	AC100~240, 50 Hz~60 Hz
On Mode	185W (On)
Standby Mode	< 0.5W
Off Mode	0W
Glass	
Thickness	3.2 mm
Gloss	≤ 0.3um
Haze	3%~8%
MOHS Hardness	5
Pencil Hardness	8H
IK Rating	IK08
Operating Conditions	
Temperature	0°C-40°C (32°F-104°F)
Humidity	20%-80% (non-condensing)
Storage Conditions	
Temperature	-20°C-60°C (-4°F-140°F)
Humidity	10%-80% (non-condensing)
Mounting	
VESA FPMPMI	Yes (600 x 400 mm)
Dimensions	
Product with Bracket (W x H x D)	1482.1 x 929.9 x 117.5 mm (58.4" x 36.6" x 4.6")
Product w/o Bracket (W x H x D)	1482.1 x 929.9 x 86.0 mm (58.4" x 36.6" x 3.4")
Packaging (W x H x D)	1660.0 x 1045.0 x 220.0 mm (65.4" x 41.1" x 8.7")
Weight	
Product w/o Bracket	40.5 kg (89.3 lb)
Product with Bracket	43.3 kg (95.5 lb)
Packaging	49.5 kg (109.1 lb)
Regulation Approval	
Certifications & Compliance	CE, LVD, RoHS, WEEE, REACH, EAC
Accessories	
Supplied	Power Cord, HDMI Cable, USB Cable, Remote Control, Batteries, Quick Start Guide, Active Pen, Stylus, Wall Mount, Wi-Fi / Bluetooth Module
Optional Accessories	
Ceiling Mount (Landscape only)	CMP-01+LMK-01
Wall Mount (Landscape only)	LMK-01, LMK-03, LMA-02
Floor Mount (Landscape only)	FMC-06, FMC-07



Wall Mount Bracket
(Pre-installed on display)



Active Pen



Stylus x 2



All specifications are subject to change without prior notice.
Copyright © 2025 AG Neovo. All rights reserved.
The name AG Neovo is a trademark of AIC.
All other trademarks are the property of their respective owners.
P/C: IF6540 Version 1.0, 20250225