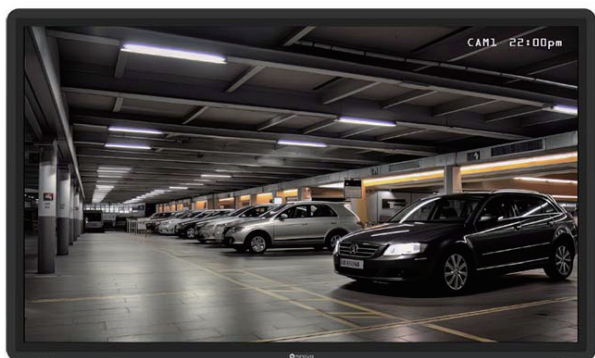
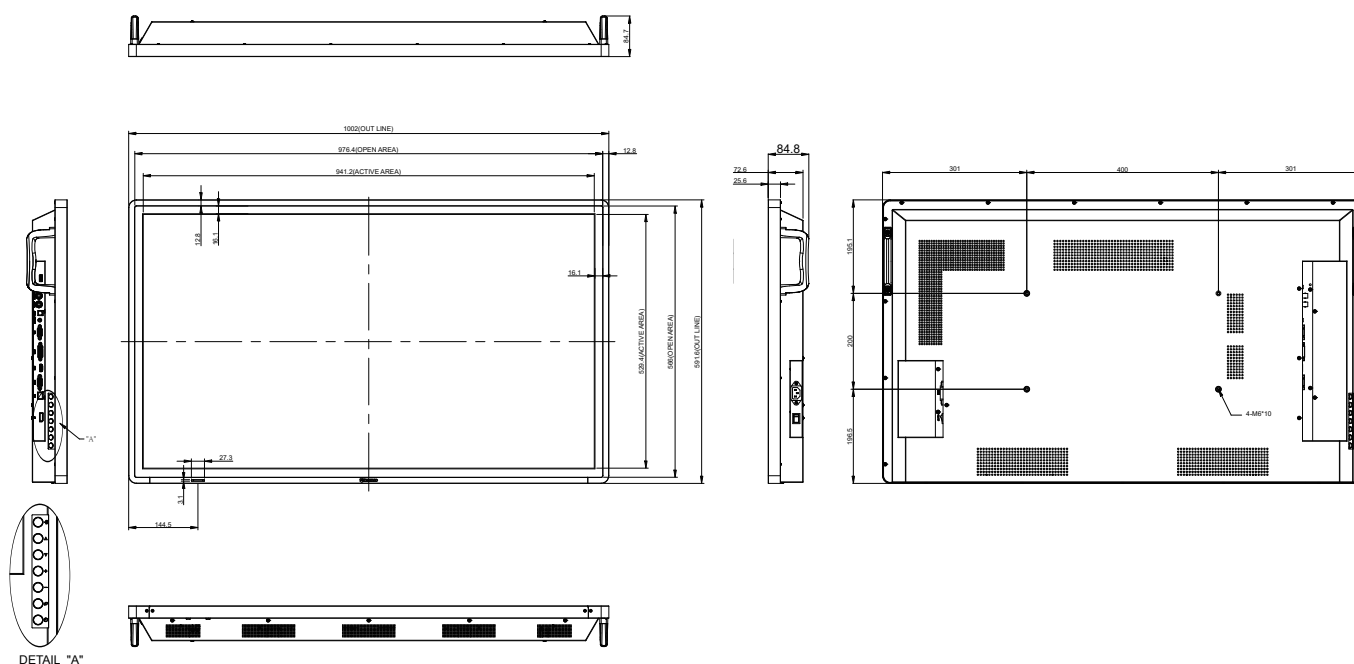


FEATURES



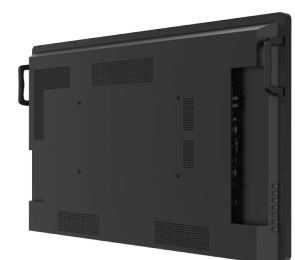
- Ultra HD 3840 x 2160 resolution and 450 nits brightness
- Anti-Burn-in™ technology prevents image ghosting
- Manufactured in Taiwan for exceptional quality
- Rigorous screening of the components for mission-critical 24/7 applications
- Front-sided IP22 rating protects the screen from liquid and dust
- IK10 metal casing protection and better thermal dissipation
- Flexible display orientation: Landscape/Portrait
- Versatile connectivity: HDMI, DVI, VGA, Composite (BNC)
- BNC passive loop-through output port
- RS232/LAN Control - provides compatibility with control systems
- CCTV picture mode for maximum image detail in low light footage
- Black-level adjustment for presenting more details in dark images
- Selectable gamma curves optimise different kinds of images
- Built-in USB media playback for simple signage content delivery
- Lockable control keys to prevent tampering in public environments

TECHNICAL DRAWING



SPECIFICATIONS

Panel	
Panel Type	LED-Backlit TFT LCD (IPS Technology)
Panel Size	43.0"
Max. Resolution	UHD 3840 x 2160
Pixel Pitch	0.245 mm
Brightness	450 cd/m ²
Contrast Ratio	1200:1
Viewing Angle (H/V)	178°/178°
Display Colour	1.07G
Response Time	5 ms
Surface Treatment	Anti-Glare Treatment (Haze 1%), 3H
Frequency	
Frequency (H)	31 kHz-92 kHz
Frequency (V)	48 Hz-76 Hz
Signal Input	
DisplayPort	1.2 x 1
HDMI	2.0 x 1
DVI	24-Pin DVI-D
VGA	15-Pin D-Sub x 1
Composite (CVBS)	BNC x 1
Signal Output	
Composite (CVBS)	BNC x 1
External Control	
RS232 In	9-Pin D-Sub
LAN	RJ45 x 1
Other Connectivity	
USB	2.0 x 1 (Service Port / Media Playback)
Audio	
Audio In	Stereo Audio Jack (3.5 mm)
Audio Out	Stereo Audio Jack (3.5 mm), S/PDIF
Internal Speakers	12W x 2
Power	
Power Supply	Internal
Power Requirements	AC 100-240V, 50/60 Hz
On Mode	88W (On)
Standby Mode	<0.5W
Off Mode	0W
Glass	
Thickness	3.2 mm (0.13")
Gloss	75±10%
Haze	3 - 8%
MOHS Hardness	6
Pencil Hardness	8H
IK Rating	IK08
Durability and Protection	
IP rating	IP22 (Front)
IK rating	IK10 (Metal casing)
Operating Conditions	
Temperature	0°C-40°C (32°F-104°F)
Humidity	20%-80% (non-condensing)
Storage Conditions	
Temperature	-10°C-60°C (-4°F-140°F)
Humidity	10%-80% (non-condensing)
Mounting	
VESA FPM PMI	Yes (400 x 200 mm)
Dimensions	
Product w/o Base (W x H x D)	1002.0 x 591.6 x 84.7 mm (39.5" x 23.3" x 3.3")
Packaging (W x H x D)	1120.0 x 710.0 x 180.0 mm (44.1" x 28.0" x 7.1")
Weight	
Product w/o Base	19.0 kg (41.89 lb)
Packaging	22.4 kg (49.38 lb)
Regulation Approval	
Certifications & Compliance	FCC, CE, LVD, WEEE, RoHS, REACH, EAC, BSMI
Accessories	
Supplied	HDMI Cable, Power Cord, Quick Start Guide, Remote Control (Batteries not included)
Optional Accessories	
Video Wall Mount	VWM-01, VWM-02
Wall Mount	LMA-01
Ceiling Mount (Landscape only)	CMP-01 + LMK-01, CMP-01 + LMK-02
Wall Mount (Landscape only)	LMA-02, LMK-01, LMK-02, LMK-03
Desk mount (Landscape only)	DTS-01
Wall Mount (Portrait only)	WMK-05



All specifications are subject to change without prior notice.
Copyright © 2025 AG Neovo. All rights reserved.
The name AG Neovo is a trademark of AIC.
All other trademarks are the property of their respective owners.
P/C: TN4310 Version 2.0, 20251003