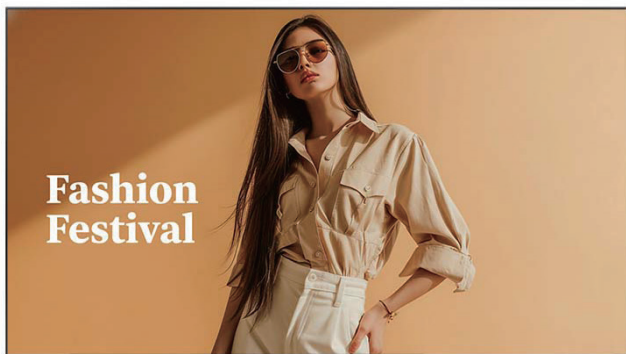


# PN-46D3 46-INCH NARROW BEZEL VIDEO WALL DISPLAY

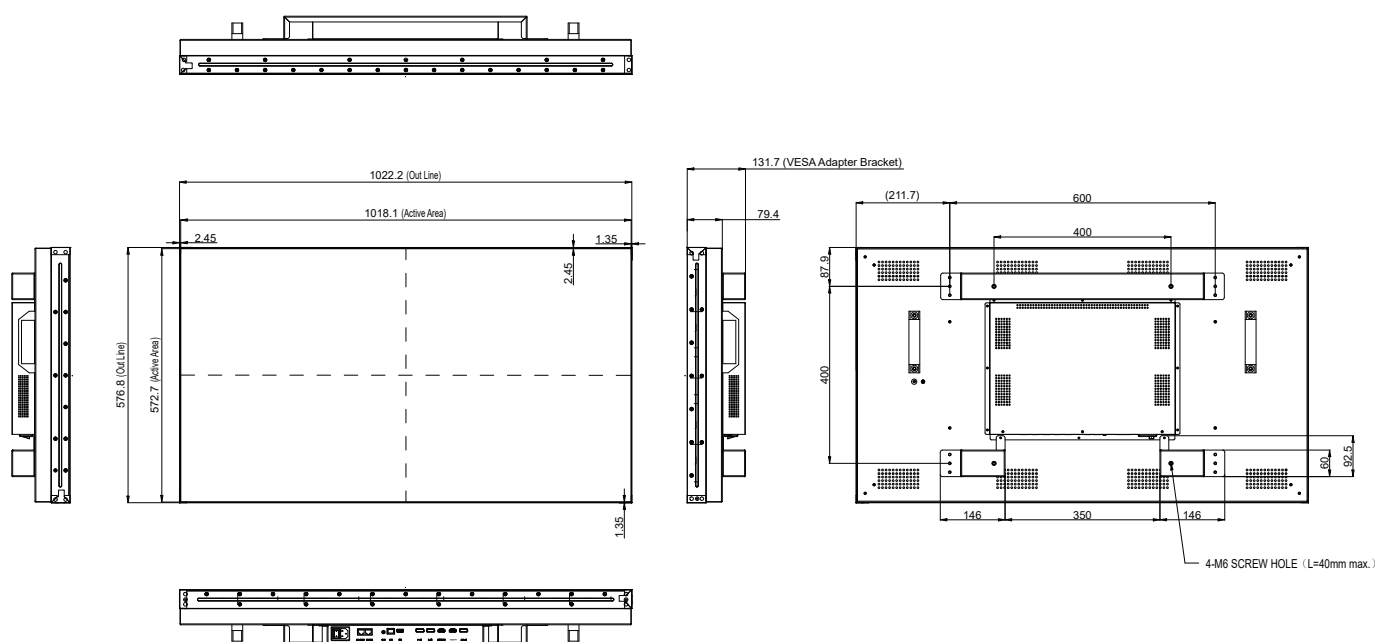
## FEATURES



- Full HD 1920×1080 resolution.
- IPS panel technology delivers high color accuracy and wide 178° viewing angles.
- Anti-Burn-in™ technology prevents image ghosting, and the anti-glare (Haze 25%) surface ensures consistent readability.
- 500 nits brightness for clear indoor visibility.
- Ultra-narrow bezel design — 2.45 mm (L/T) and 1.35 mm (R/B) — creates a 3.8 mm seamless LCD video wall.
- UniWall™ technology enables video wall configurations (up to 15×15 displays) without third-party equipment.
- DisplayPort and RS232 daisy-chain support for clean, simplified installation.
- Portrait or landscape installation flexibility.
- Versatile connectivity with HDMI, USB, and DisplayPort enables effortless system integration.
- Designed and engineered for continuous 24/7 operation.

The PN-46D3 is a 46-inch ultra-narrow bezel display engineered for professional video wall installations. Featuring UniWall™ technology and DisplayPort daisy-chain support, it enables seamless multi-screen configurations up to 15×15 without external processors. With 500 nits brightness, Full HD clarity, and flexible landscape or portrait orientation, it delivers vivid, uniform visuals suited for retail signage, public information, transportation hubs, museums, and other high-impact commercial or public spaces.

## TECHNICAL DRAWING



## SPECIFICATIONS

### Panel

Panel Type	LED-Backlit TFT LCD (IPS Technology)
Panel Size	46.0"
Max. Resolution	FHD 1920 x 1080
Pixel Pitch	0.530mm
Brightness	500 cd/m <sup>2</sup>
Contrast Ratio	1200:1
Viewing Angle (H/V)	178°/178°
Display Colour	16.7M
Response Time	5 ms
Surface Treatment	Anti-Glare Treatment (Haze 25%), 3H Hard Coating

### Frequency

Frequency (H)	30 kHz-160 kHz
Frequency (V)	50 Hz-76 Hz

### Signal Input

DisplayPort	1.2 x 2
HDMI	2.0 x 2

### Signal Output

DisplayPort	1.2 x 1
-------------	---------

### External Control

IR In	3.5 mm Phone Jack
RS232 In	RJ45
RS232 Out	RJ45
LAN	RJ45 x 1

### Other Connectivity

USB	2.0 x 1 (Service Port)
-----	------------------------

### Power

Power Supply	Internal
Power Requirements	AC 200-240V, 50/60 Hz
On Mode	103W (On)
Standby Mode	< 0.5W
Off Mode	0W

### Operating Conditions

Temperature	0°C-40°C (32°F-104°F)
Humidity	20%-85% (non-condensing)

### Storage Conditions

Temperature	-10°C-60°C (14°F-140°F)
Humidity	10%-90% (non-condensing)

### Mounting

VESA FPM PMI	Yes (400 x 400 mm)
--------------	--------------------

### Dimensions

Bezel Width	2.45 mm (Top/Left) 1.35 mm (Bottom/Right)
Product w/o Base (W x H x D)	1022.2 x 576.8 x 131.7 mm (40.2" x 22.7" x 5.2")
Packaging (W x H x D)	1145.0 x 698.0 x 215.0 mm (45.1" x 27.5" x 8.5")

### Weight

Product w/o Base	19.0 kg (41.9 lb)
Packaging	24.4 kg (53.8 lb)

### Regulation Approval

Certifications & Compliance	CE, EAC, LVD, REACH, RoHS, UKCA, WEEE
-----------------------------	---------------------------------------

### Accessories

Supplied	HDMI Cable, IR Sensor, LAN (RJ45) Cable, Plane Frame Joint, Power Cord, Quick Start Guide, Remote Control (Batteries not included), RS232 Cable
----------	---

### Optional Accessories

Video Wall Mount	VWM-01
Wall Mount	LMA-01
Floor Mount (Landscape only)	FMC-07
Desk Mount (Landscape only)	DTS-01
Ceiling Mount (Landscape only)	CMP-01 + LMK-01
Wall Mount (Landscape only)	LMA-02, LMK-01, LMK-03
Wall Mount (Portrait only)	WMK-05

